

Article :	<b>TREMIE VERTICALE</b>	<b>S.M.T.L.</b> <i>Société Mécanique Tôlerie Louhannaise</i>	
N°ensemble :			
		Date :	30/07/08

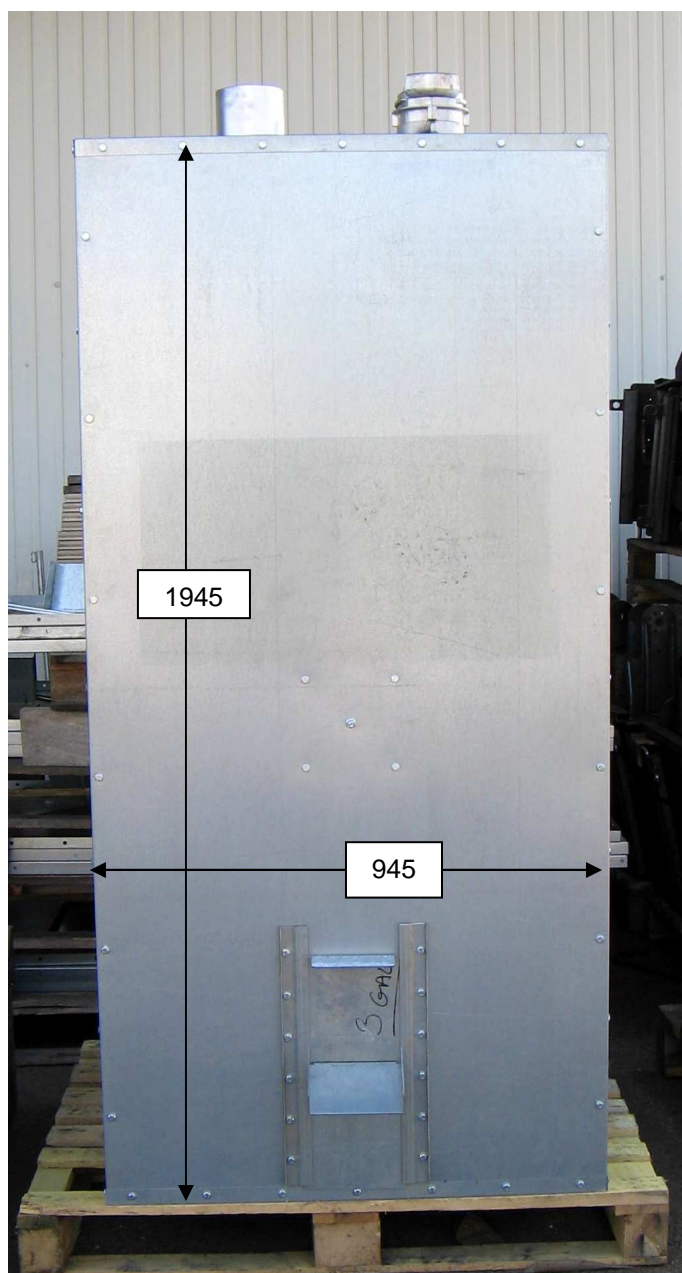
## NOTICE D INFORMATION

---



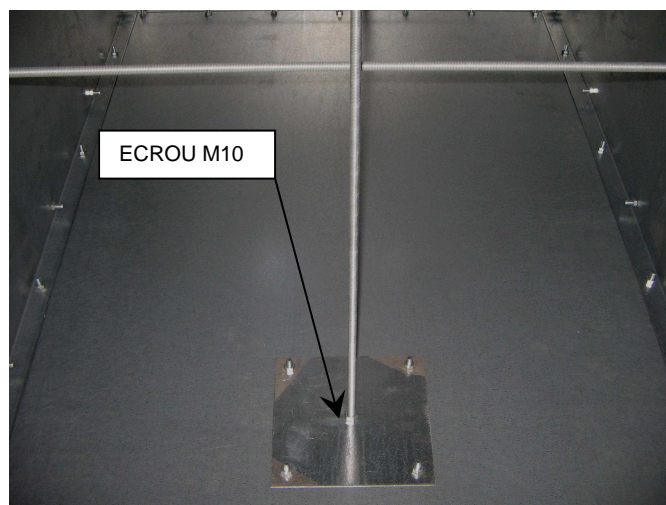
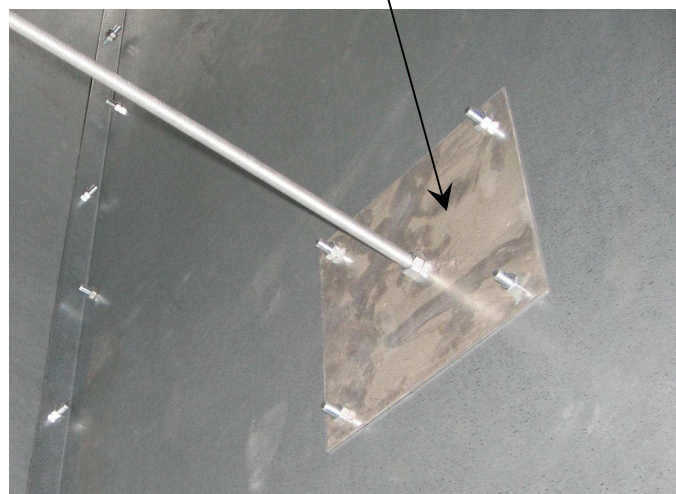
---

TREMIE EN TOLE PREGALVA 10/10 mm



LARGEUR : 945 – PROFONDEUR : 945  
HAUTEUR : 1945

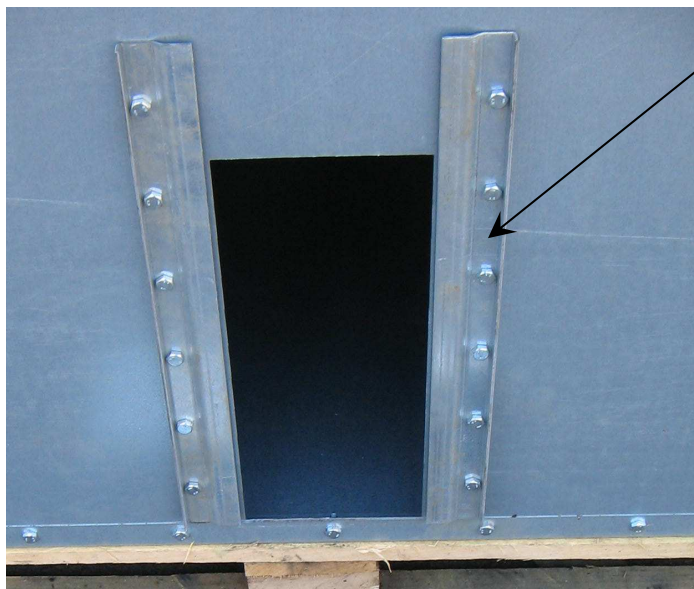
PLAQUE DE RENFORT





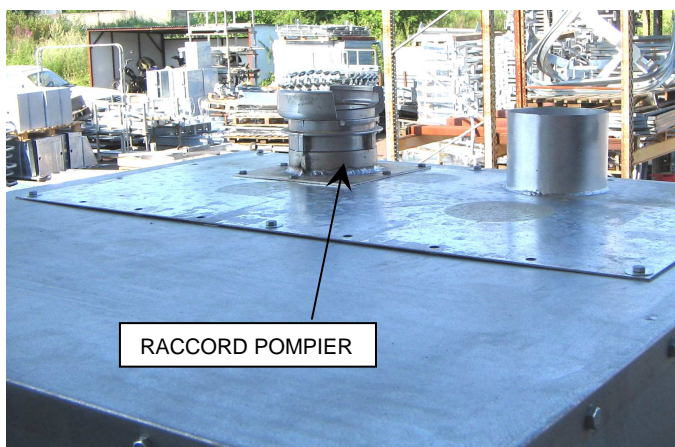
TRAPPE VIDANGE SUPERIEURE

TRAPPE VIDANGE INFERIEURE



GLISSIERES

DETAIL DE MONTAGE



RACCORD POMPIER

Plaque de remplissage sur la trémie

OÙ

Simple couvercle avec deux charnières.